

An Ambush on the Rio Grande - Images

By Steven W. Hooper



Figure 1: U.S. Customs Mounted Patrol Officer Rollin C. Nichols was ambushed by unknown assailants along the Rio Grande River just off Glenwood Street on November 24, 1933. Officer Nichols died four days later from his wounds in an El Paso hospital. Nichols regained consciousness prior to his death and was able to speak with his wife.

Source: National Customs Museum Foundation Archives.

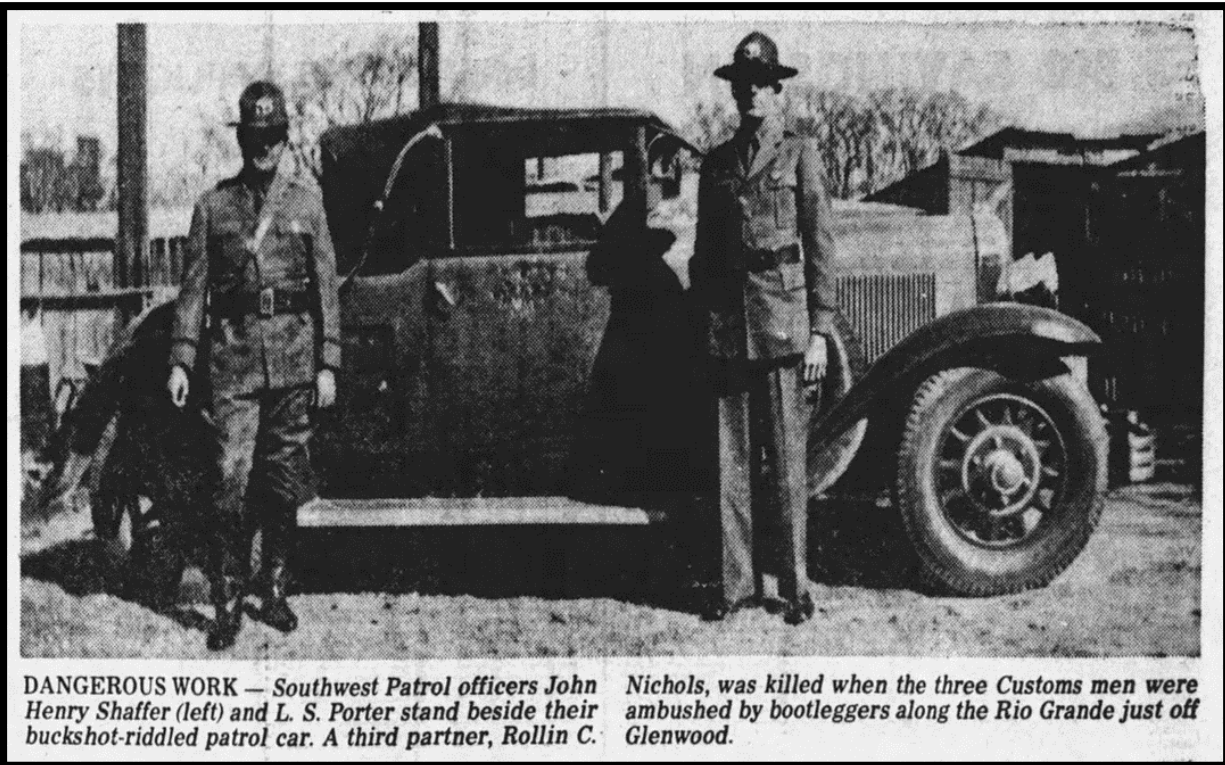


Figure 2: U.S. Customs Service Mounted Patrol Officers John Henry Shaffer (L) and Leslie S. Porter (R) stand next to their bullet riddled patrol car. They and Mounted Inspector Rollin C. Nichols were ambushed while investigating suspicious activity along the Rio Grande River near El Paso, Texas on November 24, 1933. Mounted Inspector Nichols later died from the wounds he received during the vicious attack.

Source: "Samuel K. Dolan – Author," Facebook page,
<https://www.facebook.com/photo?fbid=461152498306822&set=a.395472554874817>.