

# The “Hook” - Images

---

By Steven W. Hooper



*Figure 1:* Port Townsend, Washington Territory in 1862, the year Victor Smith was appointed Collector of Customs by President Abraham Lincoln. Collector Smith took an immediate dislike to the port city and began to make plans to move the port of entry to Port Angeles.

Source: City of Port Townsend website, <https://cityofpt.us/administration/page/history-port-townsend>.

(Copy)

Washington April 13<sup>th</sup> 1863

President Lincoln

Dear Sir

I am requested by Governor Wallace, Delegate from Washington Territory to say, that in the event of Victor Smith's being removed from the Collectorship of Tugot Sound District, that the appointment of Mr Henry Clay Wilson to the Office, would give almost universal satisfaction to the People of the Territory.

I concur with Governor Wallace in this opinion -

Very Truly  
Yours Obedt. Servt.  
A. G. Henry

22967

Figure 2: Letter from Anson G. Henry to President Abraham Lincoln dated April 13, 1863, recommending Henry Clay Wilson as a replacement for Collector Victor Smith. Wilson died before he could be appointed to the position.

Source: Library of Congress website, (<https://www.loc.gov/resource/mal.2296700/?st=gallery>). A plain text version of this document can be obtained by following this link.

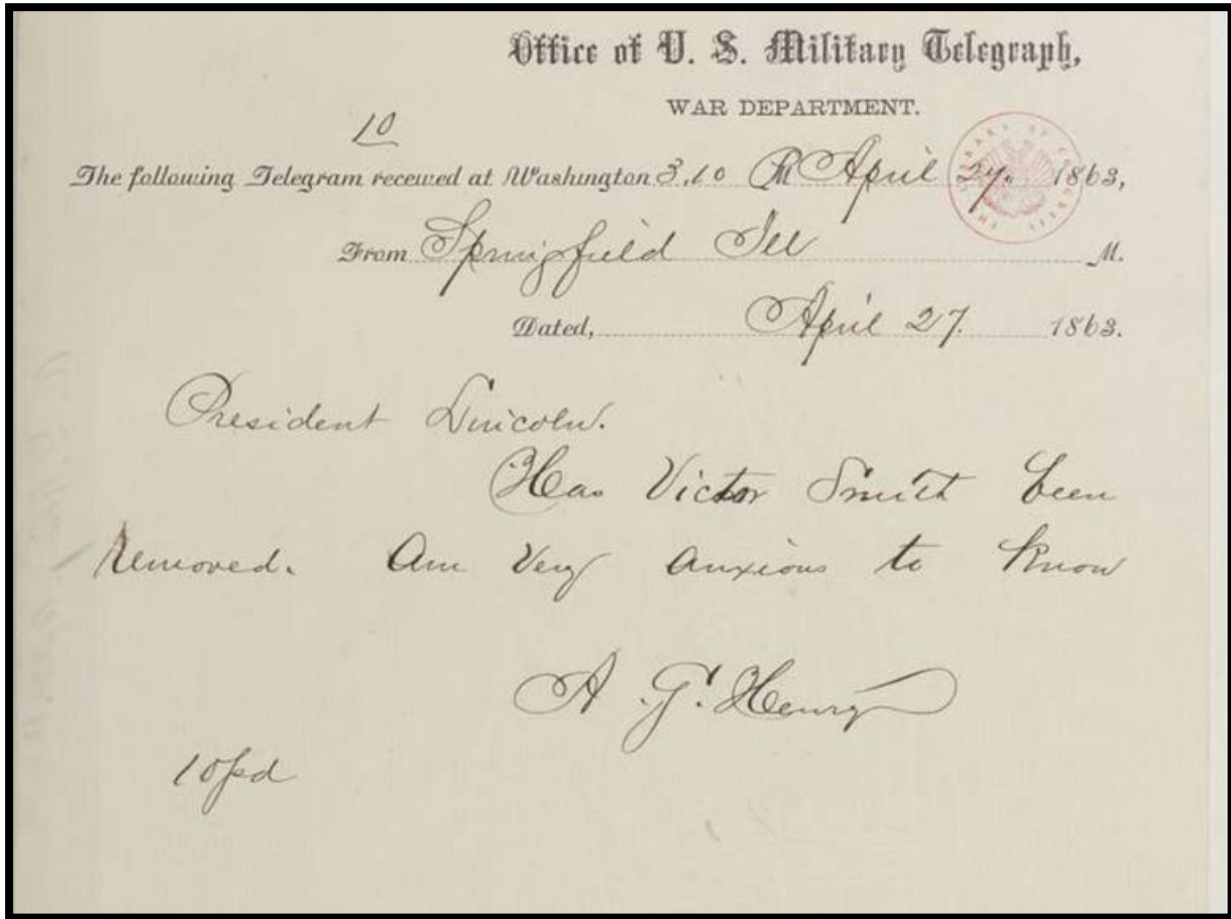


Figure 3: Telegram dated April 24, 1863, from Surveyor General Anson G. Henry to President Abraham Lincoln inquiring about the status of Collector of Customs Victor Smith's appointment.

Source: Library of Congress website, <https://www.loc.gov/item/mal2318400/>. A plain text version of this document can be obtained by following this link.

Executive Mansion,  
Washington, May 8, 1863.

Hon. S. P. Chase  
My dear Sir.

I address this to you personally, rather than officials, because of the nature of the case. My mind is made up <sup>to remove</sup> ~~that~~ Victor Smith ~~as~~ <sup>as</sup> Collector of the ~~Post~~ <sup>Post</sup> Office at the Puget Sound District, ~~and~~ in doing this, I do not decide that the charges against him are ~~correct~~ <sup>true</sup>. I only decide that the degree of dissatisfaction with him ~~is~~ <sup>is</sup> too great for him to be retained. But I believe he is your personal acquaintance & friend; and if you shall desire it, I will try to find some other place for him.

Yours as ever, A. Lincoln

23354

Figure 4: Letter dated May 8, 1863, from President Abraham Lincoln to Secretary of the Treasury Salmon P. Chase ordering the removal of Collector Victor Smith. Smith's dismissal had been urged by Lincoln's friend Anson G. Henry, the Surveyor General of Washington Territory.

Source: Library of Congress website, <https://www.loc.gov/resource/mal.2335400/?sp=1&r=-1.158,-0.037,3.315,1.75,0>. A plain text version of this document can be obtained by following this link.

Surveyor General's Office  
Olympia W.T. Mar. 21, 1864  
President Lincoln

My dear Sir

I send you enclosed a slip from the Portland Daily Union, announcing the appointment of Victor Smith as Surveyor General in my place. I don't believe it is so, yet his friends here say it is true.

I know that a vigorous effort has been made to reinstate Smith in your confidence, by showing that I obtained his removal by preferring false charges.

I have much additional evidence going to show that I have done him no injustice,

31712

Figure 5: Letter dated March 21, 1864, from Surveyor General Anson G. Henry to President Abraham Lincoln regarding rumors that Smith was attempting to oust Henry from his position as Surveyor General. Due to the inferior quality of the original image, you may have to click on the source link to read the document.

Source: Liberty of Congress website, <https://www.loc.gov/resource/mal.3171200/?sp=1&r=1.133,-0.089,3.265,1.75,0>. A plain text version of this document can be obtained by following this link.

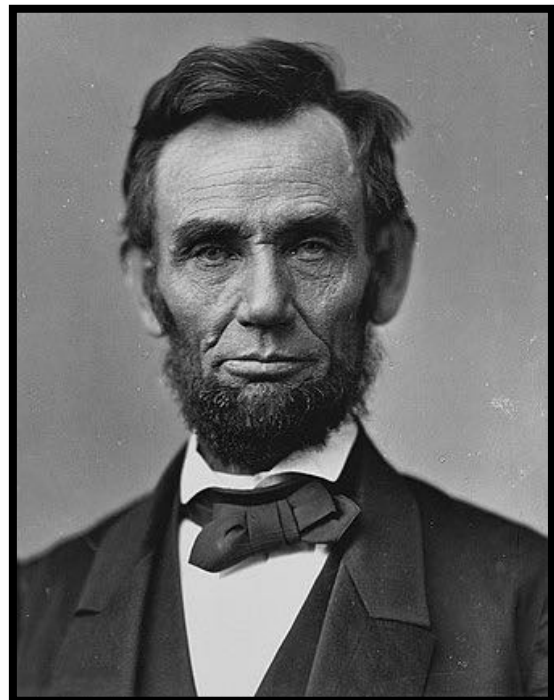
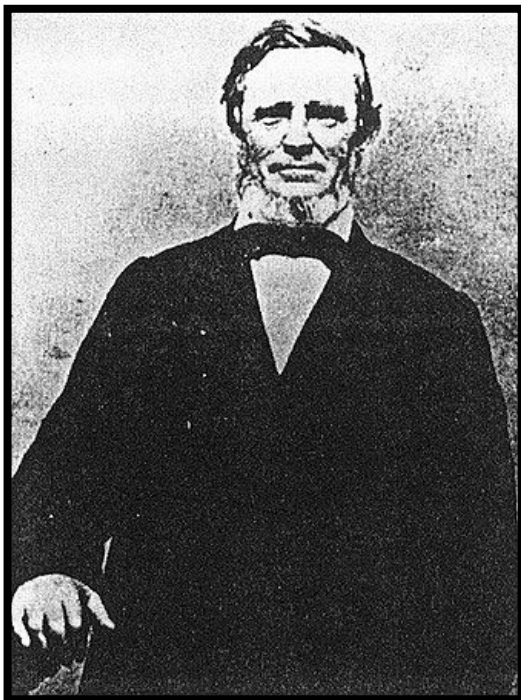
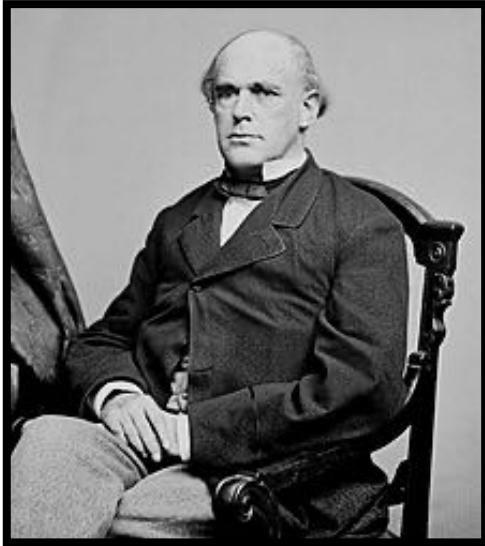


Figure 6: (Upper Images) Secretary of the Treasury Salmon P. Chase and his close friend Victor Smith's memorial at Crescent City, California. No image of Smith is known to exist.

(Lower Images) Anson G. Henry, Surveyor General of the Washington Territory and his close friend President Abraham Lincoln.

Sources: Wikipedia website, [https://en.wikipedia.org/wiki/Anson\\_G.\\_Henry](https://en.wikipedia.org/wiki/Anson_G._Henry), [https://en.wikipedia.org/wiki/Abraham\\_Lincoln](https://en.wikipedia.org/wiki/Abraham_Lincoln), [https://en.wikipedia.org/wiki/Salmon\\_P.\\_Chase](https://en.wikipedia.org/wiki/Salmon_P._Chase), and <https://noehill.com/delnorte/cal0541.asp>.