

The Wreck of the *Princess Sophia* Images

By Steven W. Hooper

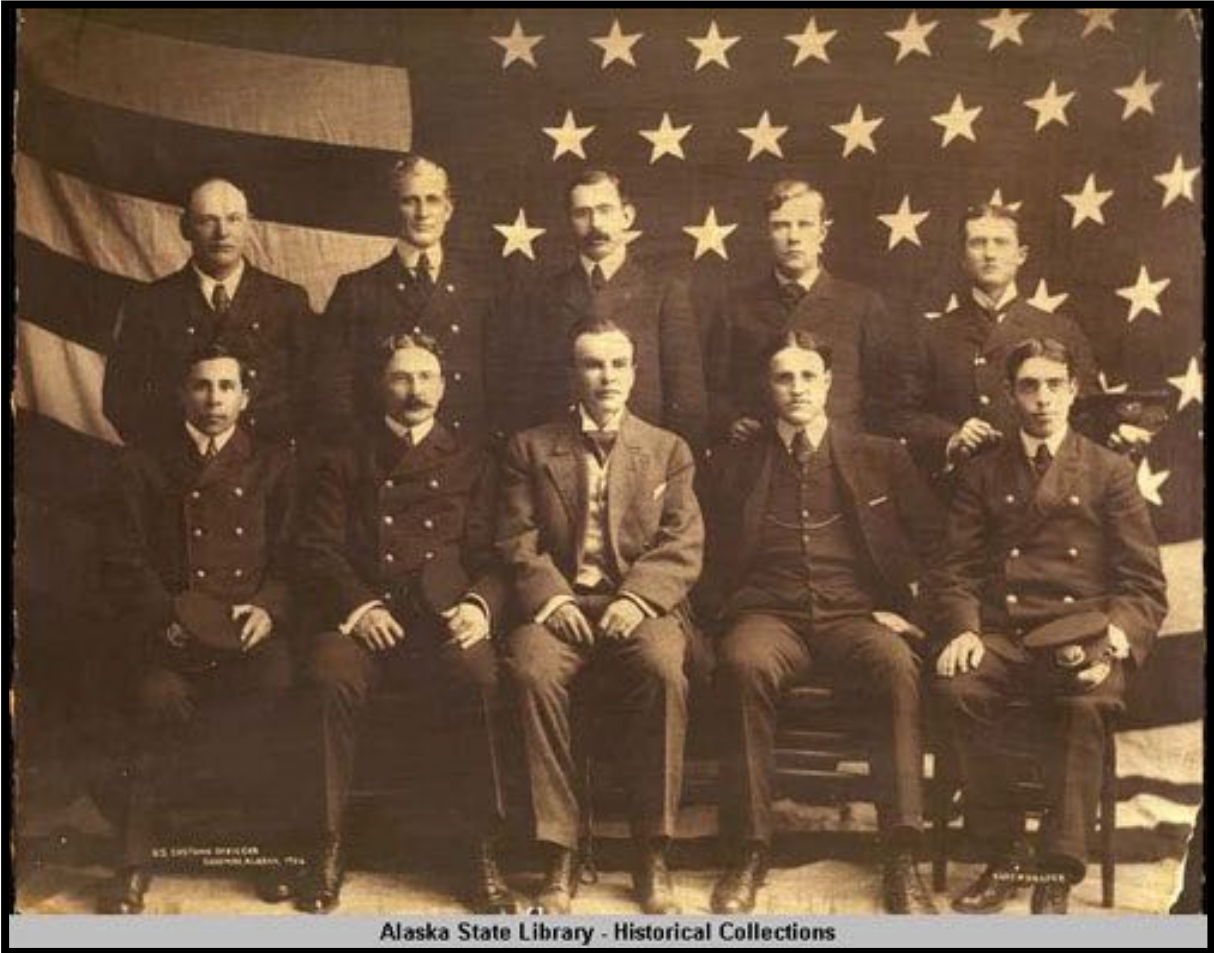


Figure 1: U.S. Collector of Customs for Alaska, John "Jack" Fraser Pugh (second from the right on the bottom row), along with other U.S. Customs officers in Alaska. The wreck of the *Princess Sophia* was not the first shipwreck Pugh had experienced in Alaska. Collector Pugh and his wife had survived the 1913 shipwreck of the *SS State of California* in Gambier Bay when the ship struck a rock and sunk causing the loss of over 30 lives.

Source: Sit News website,
http://www.sitnews.us/Kiffer/PrincessSophia/120505_princess_sophia.html.
Included in accordance with [Title 17 U.S.C. Section 107](#).



Figure 2: Image of the 245-foot Scottish built *SS Princess Sophia* which came to be known as “The Ship of Sorrow” and the “Titanic of the West Coast.” This ship was operated by the Canadian Pacific Railway company and was used to travel the inside passage from Vancouver, Canada to Skagway, Alaska.

Source: National Park Service website, <https://www.nps.gov/articles/khns-princess-sophia.htm>. Included in accordance with [Title 17 U.S.C. Section 107](#).

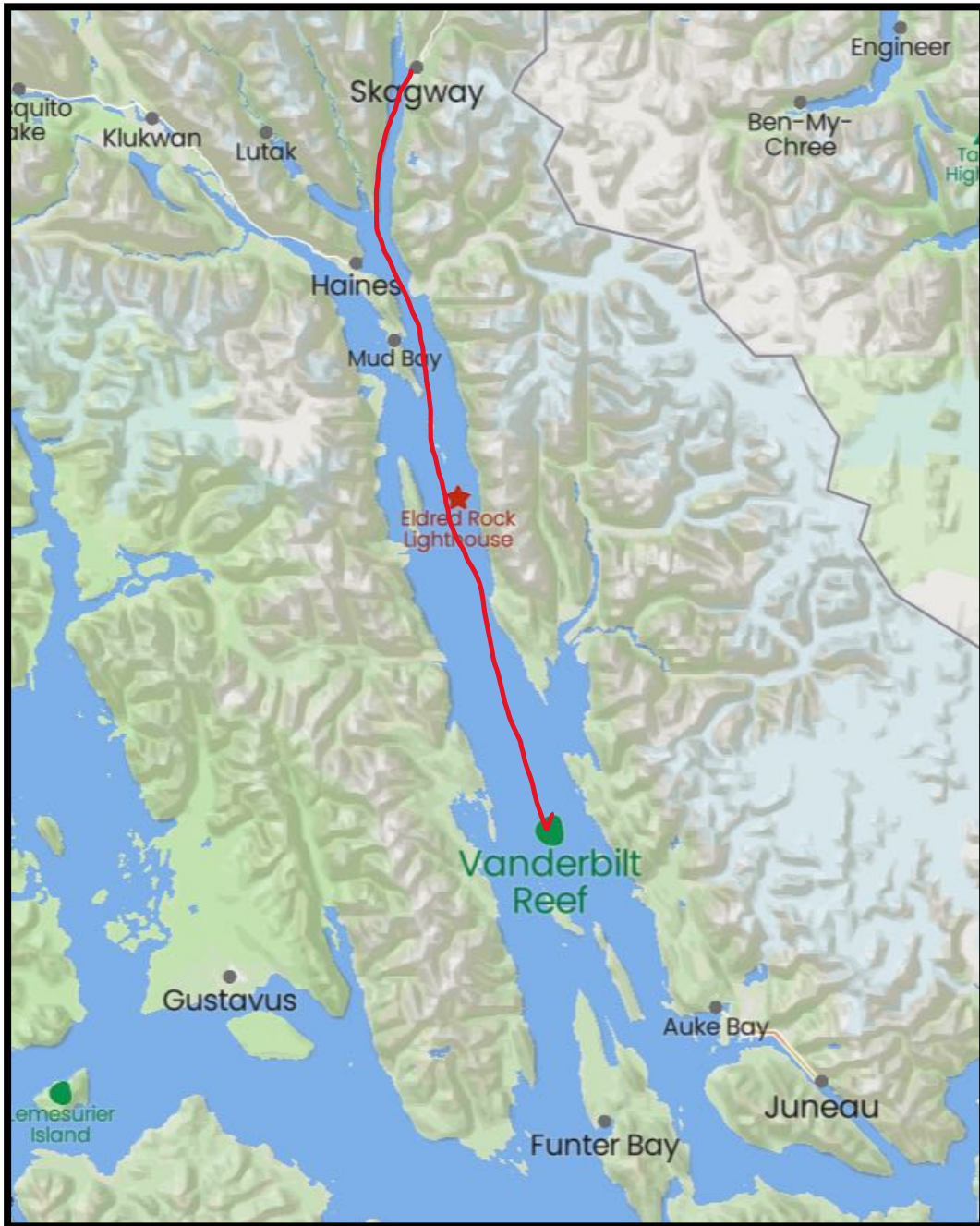


Figure 3: Route of the SS Princess Sophia on her trip from Skagway to Juneau. The ship was lodged on the Vanderbilt Reef for almost forty hours before slipping into the sea killing all aboard. High winds and waves made it impossible to save any of the people aboard the doomed ship.

Source: "Vanderbilt Reef," Mapcarta website, <https://mapcarta.com/23462152>. Included in accordance with [Title 17 U.S.C. Section 107](#).



Figure 4: The *Princess Sophia* sat atop the Vanderbilt Reef for almost 40 hours before sinking. The object in the foreground is the only navigational aid on the reef in 1918. The buoy was not lighted.

Source: National Park Service website, <https://www.nps.gov/articles/khns-princess-sophia.htm>. Included in accordance with [Title 17 U.S.C. Section 107](#).



Figure 5: A modern navigation aid now sits atop Vanderbilt Reef in the Lynn Canal fjord just north of Juneau, Alaska. Look for the beacon on your next Alaskan cruise up the inside passage.

Source: Wikipedia website

https://en.wikipedia.org/wiki/Vanderbilt_Reef#/media/File:Vanderbilt_Reef_Beacon.jpg. Included in accordance with [Title 17 U.S.C. Section 107](#).